

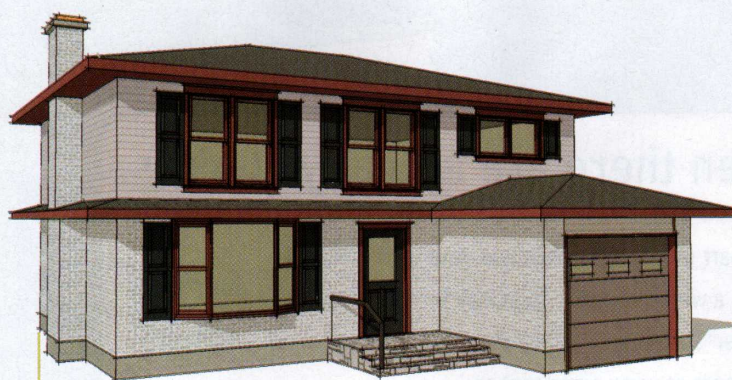
## Sylvia O'Brien, colour specialist, Colour Theory, Toronto

"The paint colours I chose are a spinoff of the brick colour with a nod to the dark grey roof. The front door should be the focal point; the simplest way to highlight it is to paint it an accent colour. In these examples, I've echoed this accent colour on the shutters as

well. If you want to strengthen the presence of your front door, consider enhancing it with a more elaborate trim. I've made the garage door similar in tone to the brick. It's essentially a darker version of the siding colour, which keeps the palette simple."



**front door, shutters** Benjamin Moore Evening Dove 2128-30 exterior semigloss **garage door** Pittsburgh Paints Jute 314-5 exterior semigloss **siding** Pittsburgh Paints Spiced Vinegar 314-4 exterior satin **trim** Benjamin Moore Abyss 2128-20 exterior semigloss



**front door, shutters** Glidden/Color Your World Noble Grey 30BB 10/019 exterior semigloss **garage door** Pittsburgh Paints Shining Armor 540-5 exterior semigloss **siding** Pittsburgh Paints Silver Bells 540-4 exterior satin **trim** Benjamin Moore Plum Raisin 2082-20 exterior semigloss

**front door, shutters** Pratt & Lambert Mincemeat 5-22 exterior semigloss **garage door** Pittsburgh Paints Stonehenge Greige 515-5 exterior semigloss **siding** Pittsburgh Paints Moth Gray 515-4 exterior satin **trim** Benjamin Moore Iron Mountain 2134-30 exterior semigloss ▶

